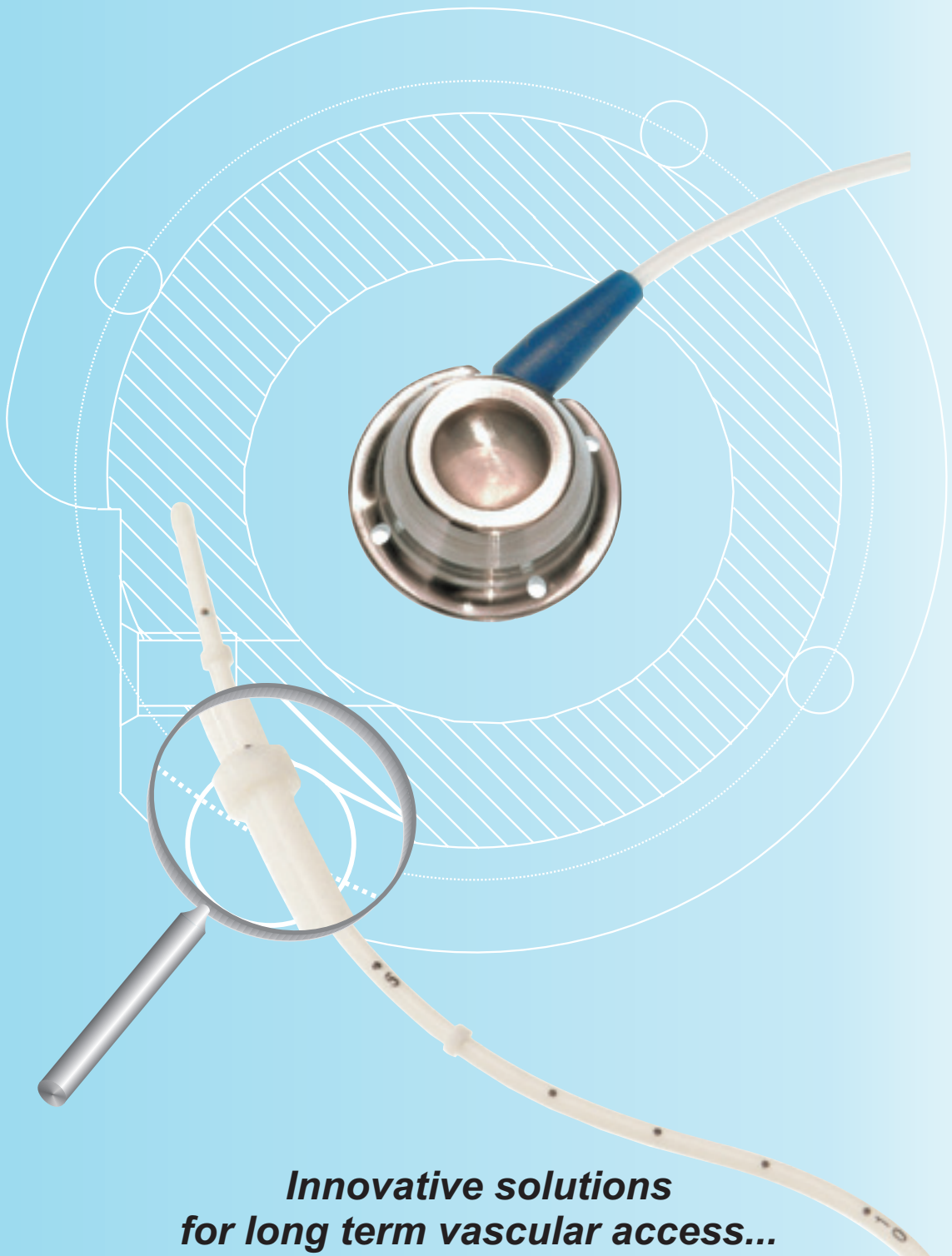


NuPort[®]-AB Arterial Access System

The Subcutaneously implanted NuPort[®]-AB minimises patient anxiety, site preparation, maintenance, and risk of infection that are associated with externalised catheters.

NuPort[®]-AB



***Innovative solutions
for long term vascular access...
... from specialists!***

NuPort®-AB

The NuPort® port system designed for the procedures required in arterial access therapies.

The NuPort®-AB provides chronic access to the hepatic artery for repeated drug delivery via bolus or protracted infusions.

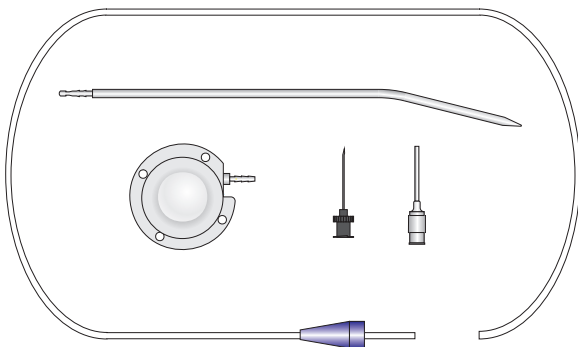
The thick-walled 6 French catheter is designed to withstand pressures of the arterial system and sewing beads aid in arterial catheter/vessel sealing.

The NuPort®-AB retains all of the features of the NuPort® such as the "NuFlo™" reservoir and tangential outlet. These advantages make the NuPort®-AB the logical choice in addressing the needs of arterial therapies.

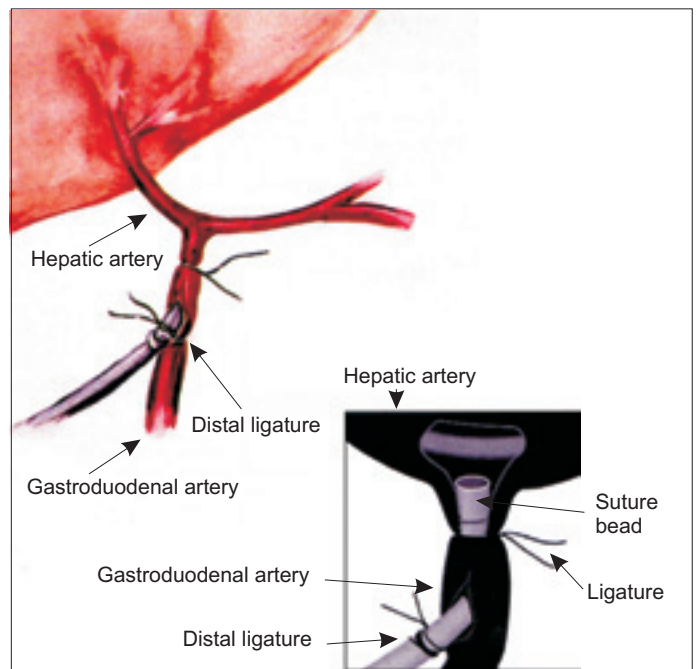
Basic Cut-Down Set

Ordering Information:

NuPort-AB	Ref: PA-006CS
Content:	1 x Port
	1 x 6F Catheter w/ sewing beads
	1 x "Huber"-Needle, straight
	1 x Blunt needle for irrigation
	1 x Tunneler



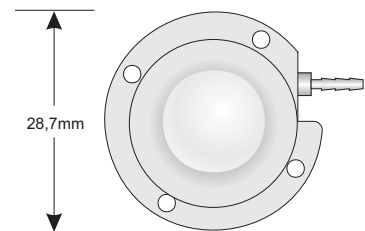
Arterial catheter position and fixation



Port Specifications

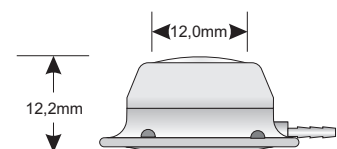
Material:

Port:	Titanium, MRI Compatible
Septum:	Silicone elastomer
Weight:	12.5g
Volume:	~0.5ml



Catheter Specifications

	Size	Material	O.D. (mm)	I.D. (mm)	Length (cm)
Catheter	F6	Silicone	2.00	0.60	70
Suture Beads	F7	Silicone	2.40		



All catheters are tapered at the distal end, have depth markings from 1 cm to 30 cm, in 1 cm intervals, and are radiopaque. Sewing beads are located distally at 1.5, 3.0 and 4.5 cm.

PHS MEDICAL®
PHS Medical GmbH

Leipzigerstr. 246, DE-34260 Kaufungen, Germany
 Tel: +49(0)5605/94 96-0 Fax: +49(0)5605/94 96-99
 e-mail: info@phs-medical.de